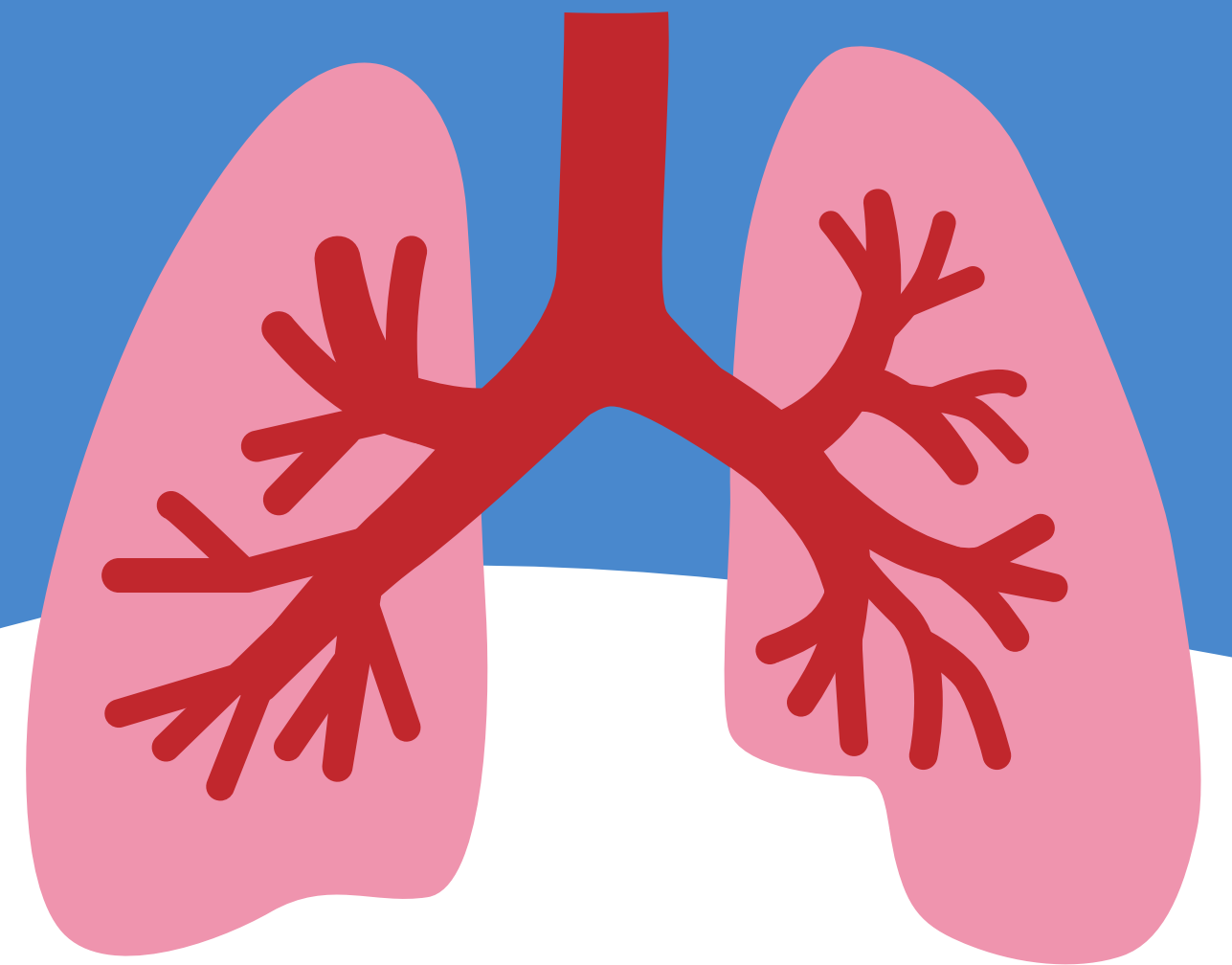


Diagnostic Teaching:

Asthma

By: Carina Bergouignan



Diagnosis



Asthma is defined as "a long-term disease of the lungs. It causes your airways to get inflamed and narrow, and it makes it hard to breathe. Severe asthma can cause trouble talking or being active. You might hear your doctor call it a chronic respiratory disease."



Asthma Population



"It is the leading chronic disease in children. Currently, there are about 5.1 million children under the age of 18 with asthma."



Asthma's impact on the Body

on the pediatric population

Symptoms of Asthma include:

- Wheezing sound when breathing out
- Chest tightness
- Shortness of breath
- Coughing (which can be triggered by environmental factors)



Changes to Development



Physical



Cognitive



Emotional



Social



Language

Physical

- Coughing
- Wheezing
- Tightness in the chest
- Shortness of breath
- Awakening in the night from coughing or wheezing
- Unusual tiredness or restlessness
- Trouble sitting still
- Crankiness
- Looking worried or scared
- Pale, sweaty skin
- Fast breathing
- Slouching Over



Cognitive

According to research "Asthma primarily affects the lungs, but can impact brain function through direct and indirect mechanisms. Some studies have suggested that asthma negatively impacts cognition, while others have failed to identify asthma-related cognitive compromise."



Emotional

The severity of the Asthma plays a role in a child's emotional state including:

- **When to set boundaries and limits on activities**
- **Where those activities take place**
- **Your personality**
- **Support systems (friends and family)**
- **How much asthma limits your activities**
- **What the child is able to understand in regards of their diagnosis**
- **How the child copes with their diagnosis**



Social

"Many parents also limit their children's physical and social activities because they're worried about their safety."



" Limiting these sorts of activities, like sports, can cost kids exercise, healthy habits, and some opportunities for social interaction and growth, which can isolate them from other kids and make them feel alone."



Language



Asthma and allergies can play a role in childhood communication disorders as they effect the respiratory tract.

"Up to 50% of children with speech and voice disorders also have asthma, allergic rhinitis, or both (Baker, Baker, & Le, 1982; Keating, Turrell, & Ozanne, 2001)."

Test, Procedures and Treatments



Test



Procedures

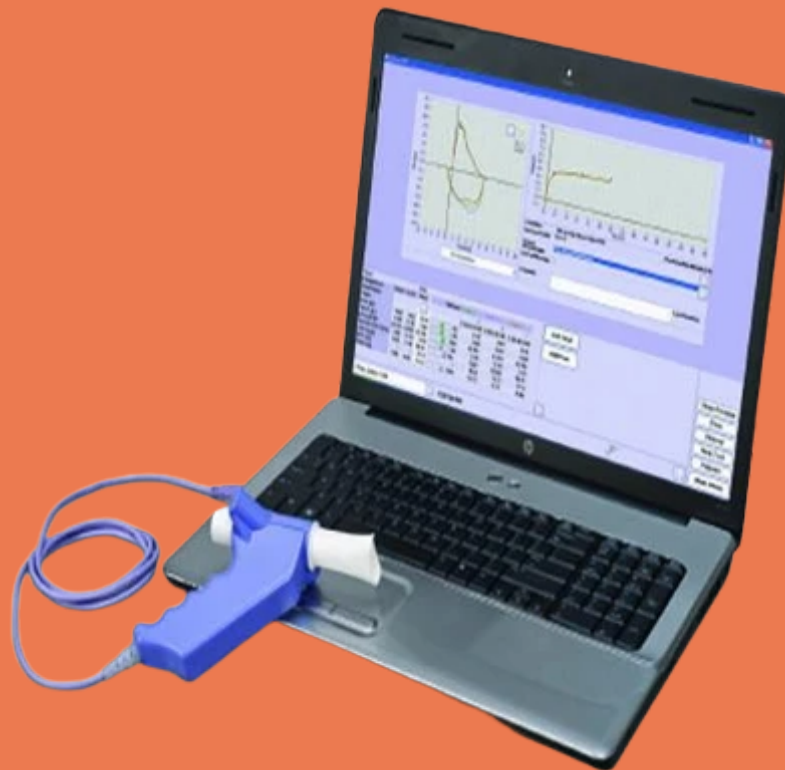


**Treatments
and
Medications**

Test

The most common lung function test is called spirometry.

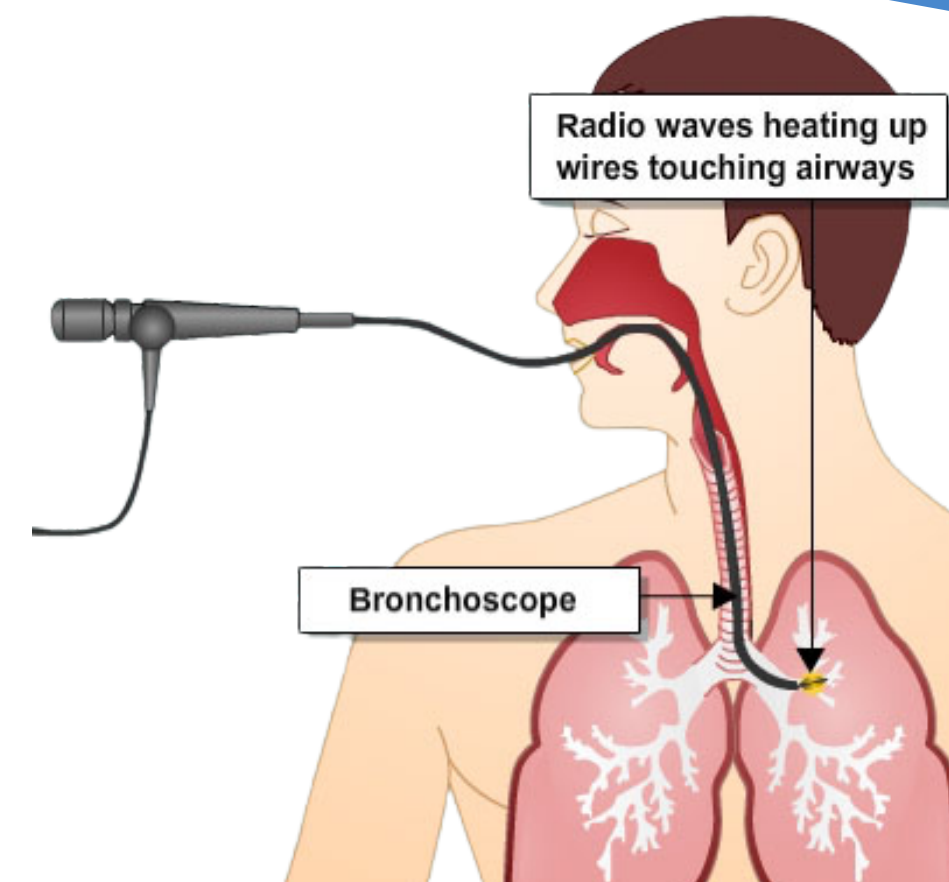
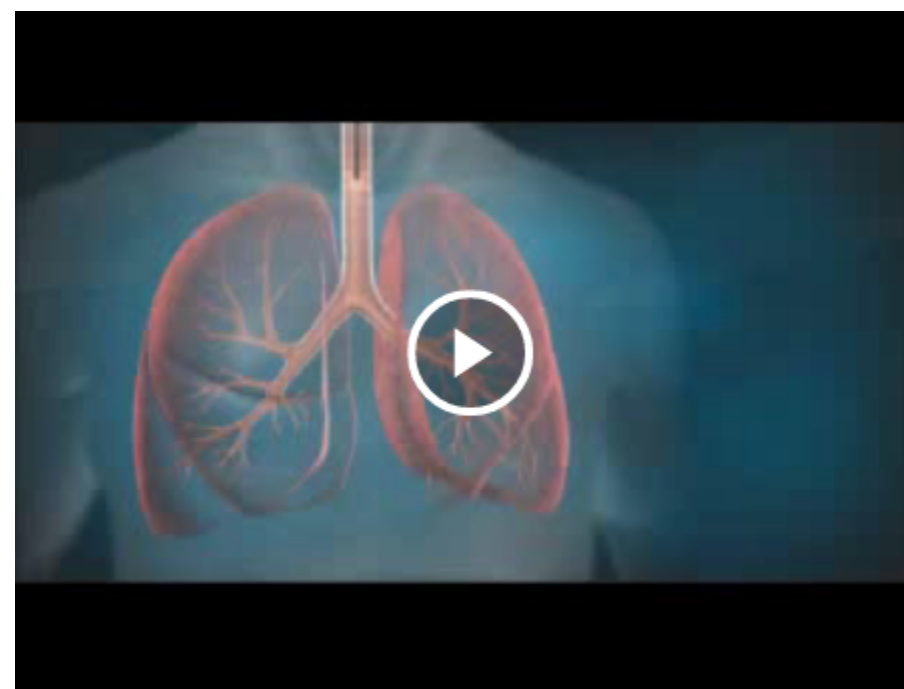
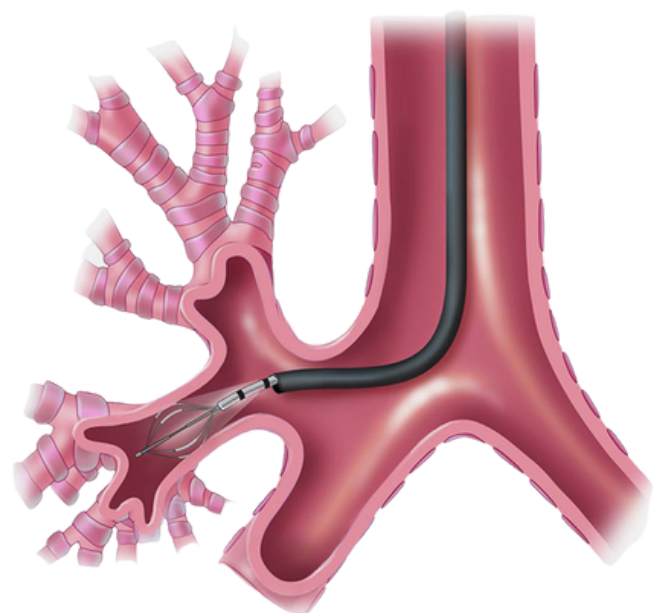
This lung function test uses a device called, a spirometer, to measure the amount and speed of the air you blow out.



Procedures

Typically Asthma can be resolved without procedures. In severe cases there is a procedure called Bronchial Thermoplasty.

"Under sedation, a catheter inside a bronchoscope—a thin, flexible tube-like instrument introduced through the patient's nose or mouth, and into their lungs—delivers thermal energy into the airways. The catheter delivers a series of 10-second temperature controlled bursts of radio frequency energy which heat the lining of the lungs to 65 degrees Celsius. It is this heat that destroys some of the muscle tissue which constricts during an asthma attack, reducing the number and severity of exacerbations."



Asthma Treatments



Treatments

- **Bronchodilator:** Helps open the airways of the lungs to make breathing easier.
- **Steroid:** Modifies or simulates hormone effects, often to reduce inflammation or for tissue growth and repair.
- **Anti-inflammatory:** Prevents or counteracts swelling (inflammation) in joints and tissues.





Implications

Diet

Food that can trigger asthma:

- Eggs
- Cow's milk
- Peanuts
- Tree nuts
- Soy
- Wheat
- Fish
- Shrimp and other shellfish
- Salads
- Fresh fruits



Foods with preservatives are also triggers.

Implications

continued...

Family

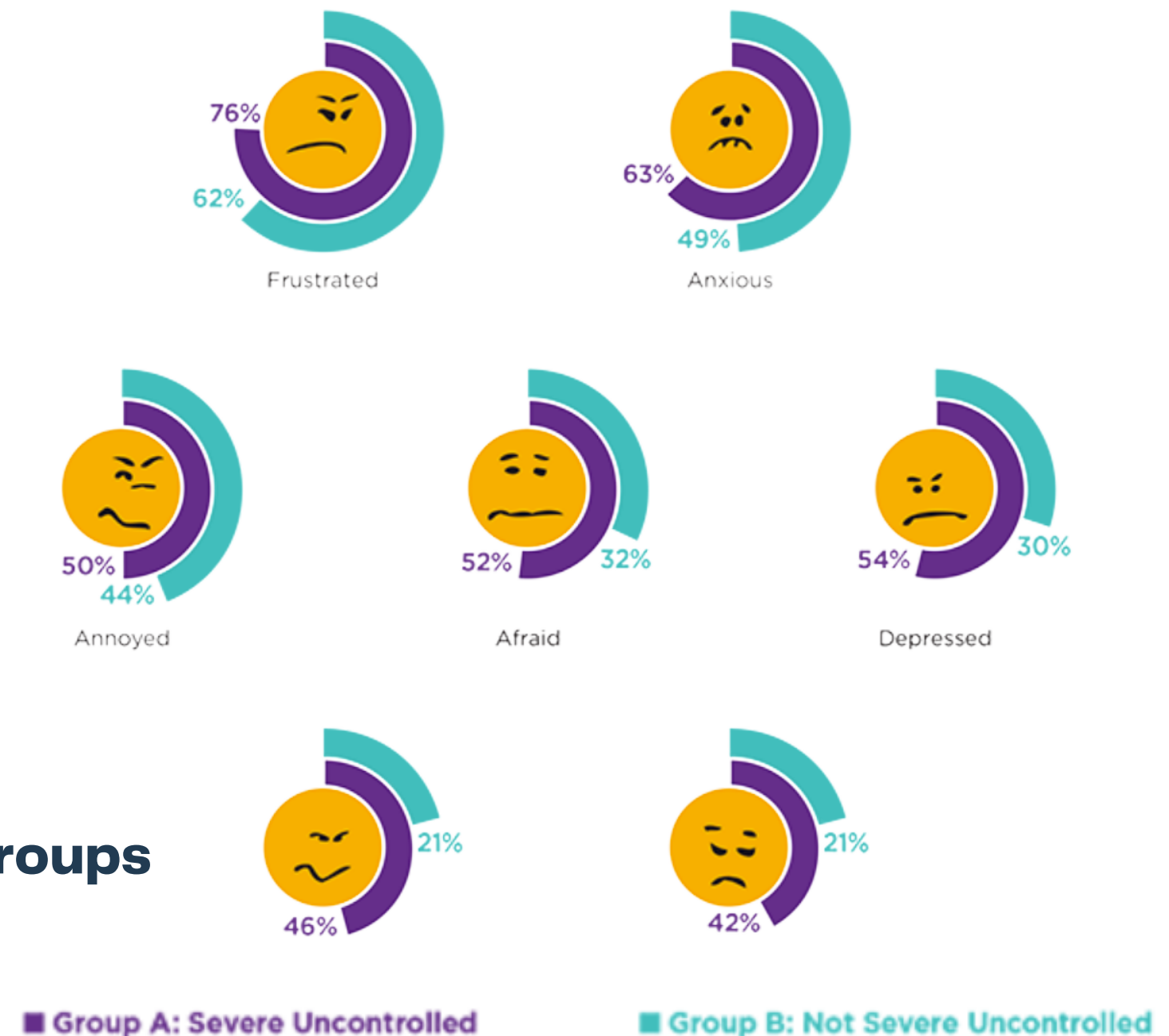
According to the My Life With Asthma online survey

- 64% said asthma affected their family relationships
- 55% said it had a negative impact on relationships
- 17% had no impact on any relationship

The study looked at two groups:

- **Group A: People with “severe uncontrolled” asthma**
- **Group B: People with “not severe uncontrolled” asthma**

The chart to the right is the range of emotions felt by both groups



Child Life Interventions

ASTHMA EDUCATION

A S T H M A

AIRWAYS

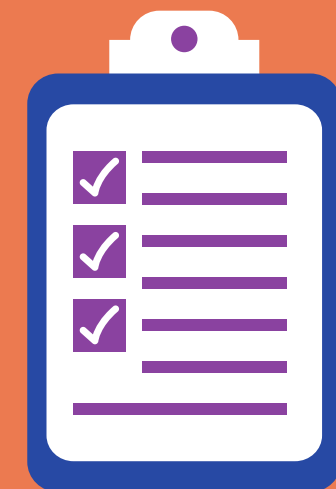
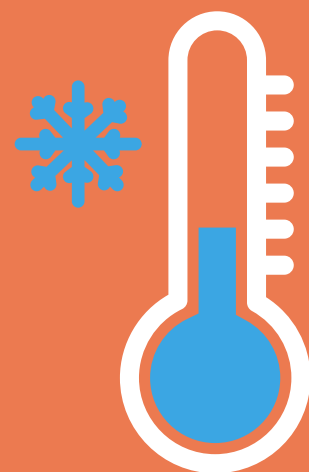
SYMPTOMS

TECHNIQUES/
TRIGGERS

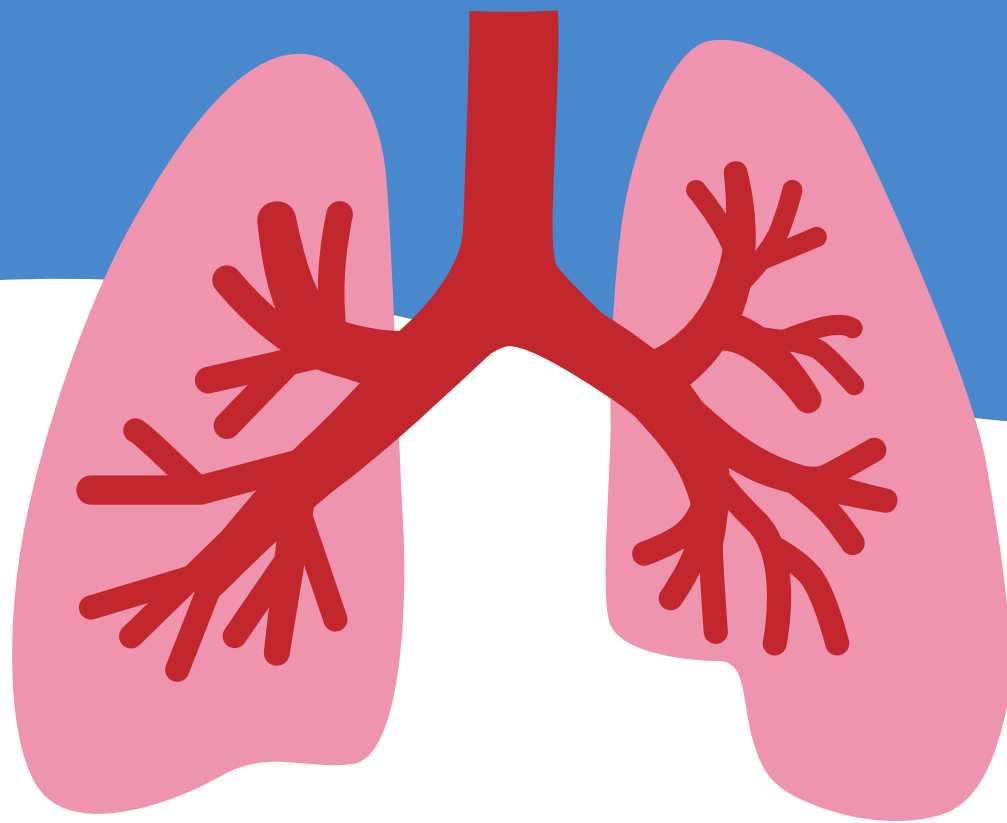
HELP

MEDICATIONS

ASTHMA
COPING PLAN



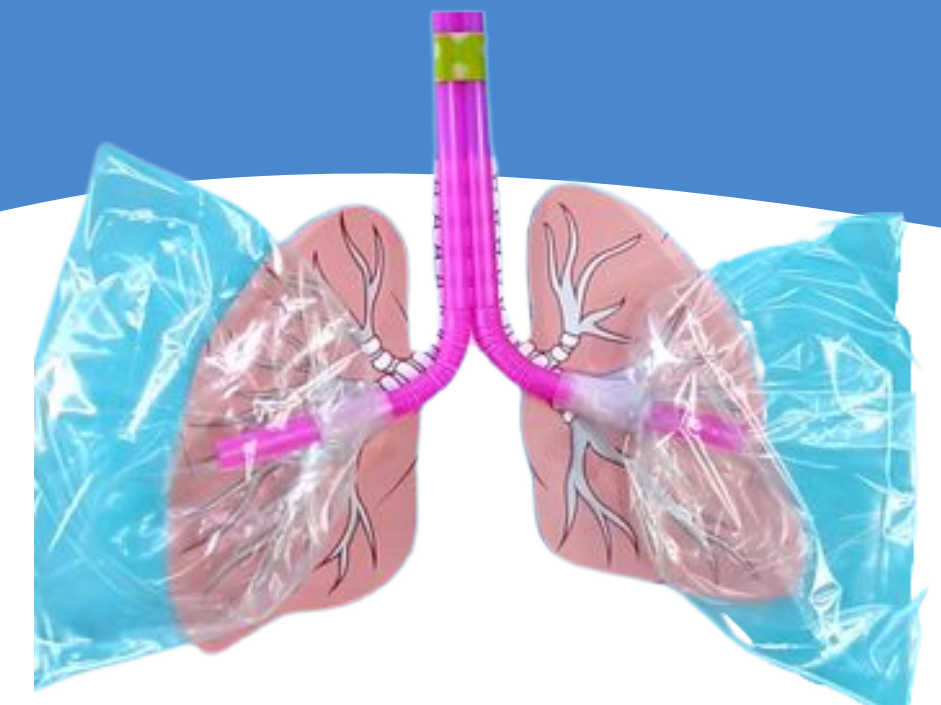
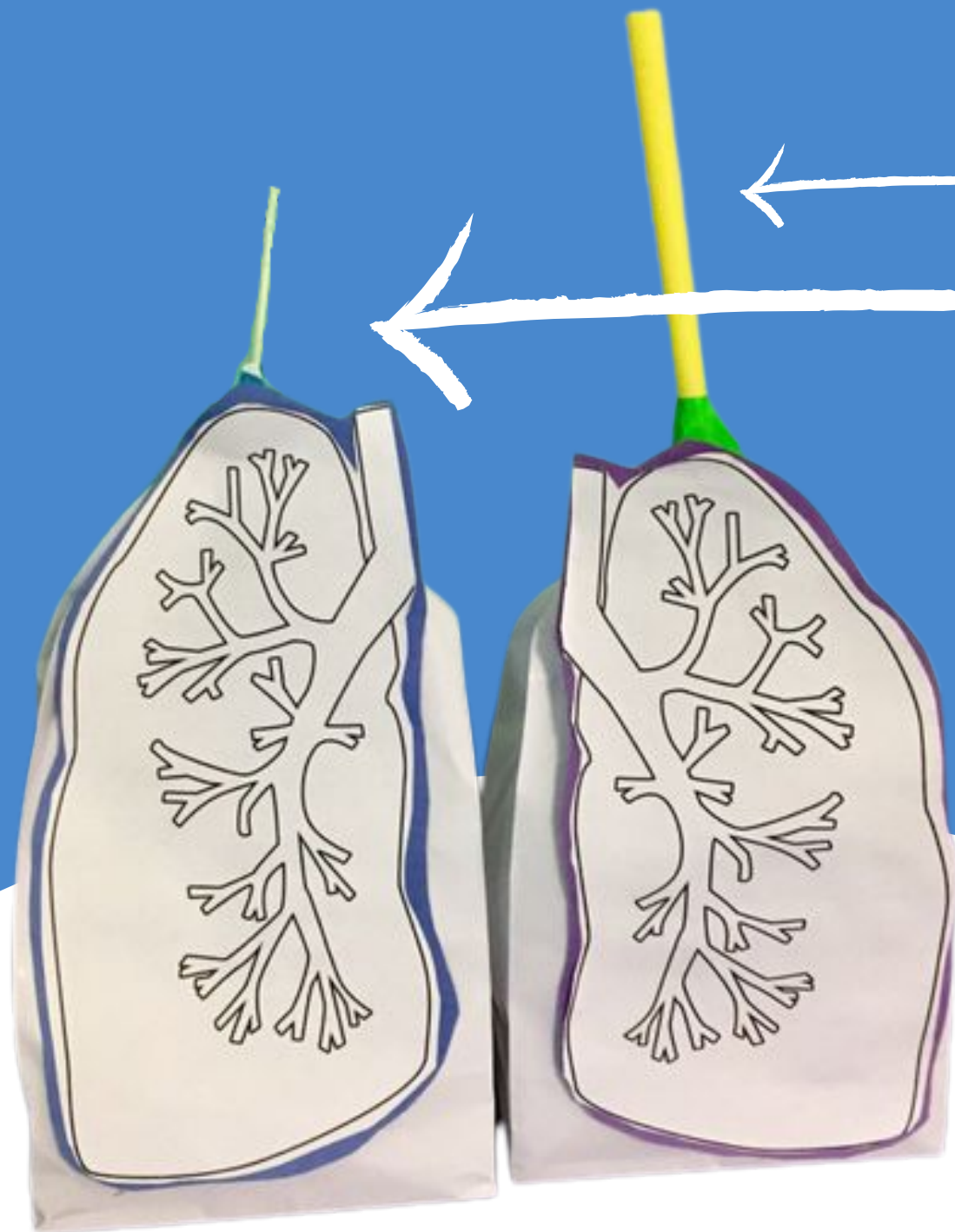
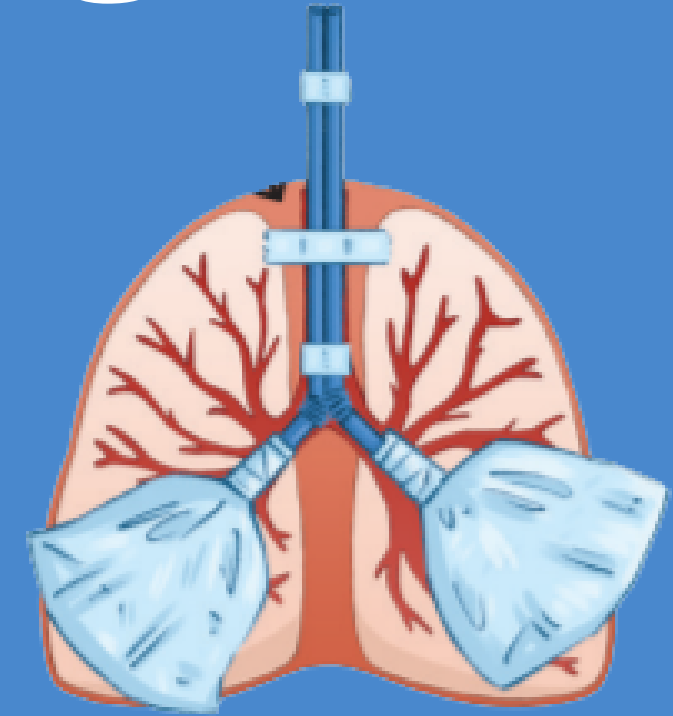
Diagnostic Teaching



Diagnostic Teaching

Materials

- Wide straw (smoothie/shake)
- Thin straw
- Tape
- Printable Lungs or Markers to draw lungs
- 2 Paper bags or Ziplocs

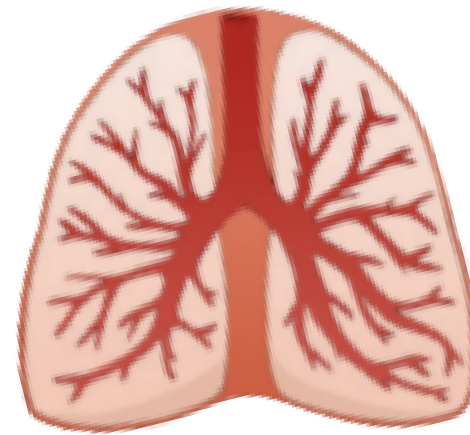


Diagnostic Teaching

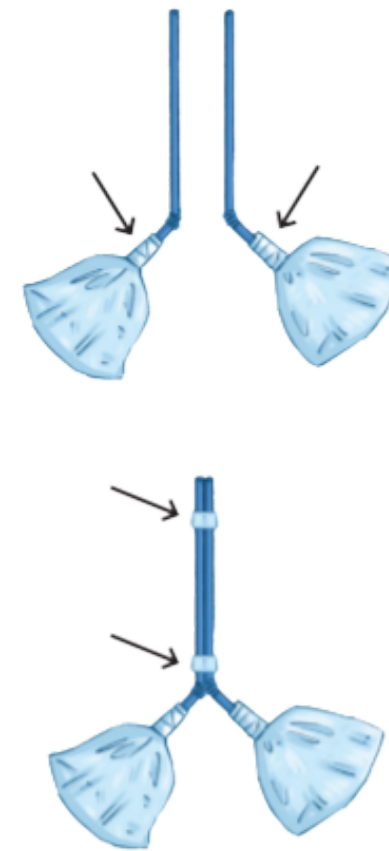
Activity



Step 1

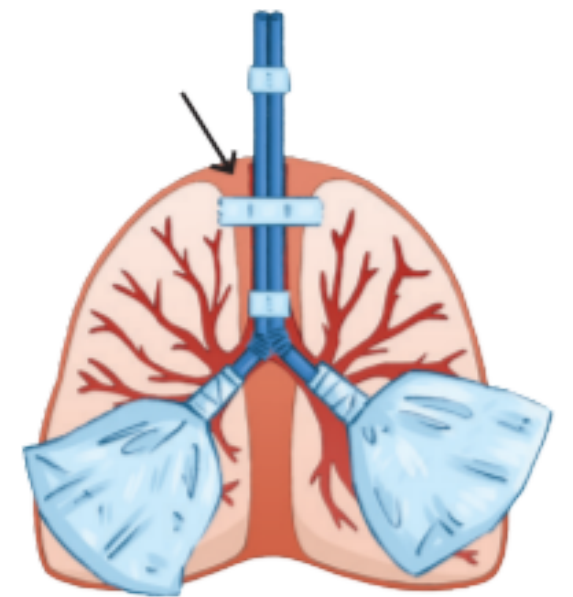


Step 2

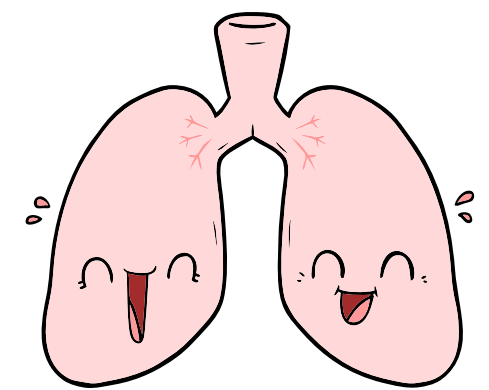
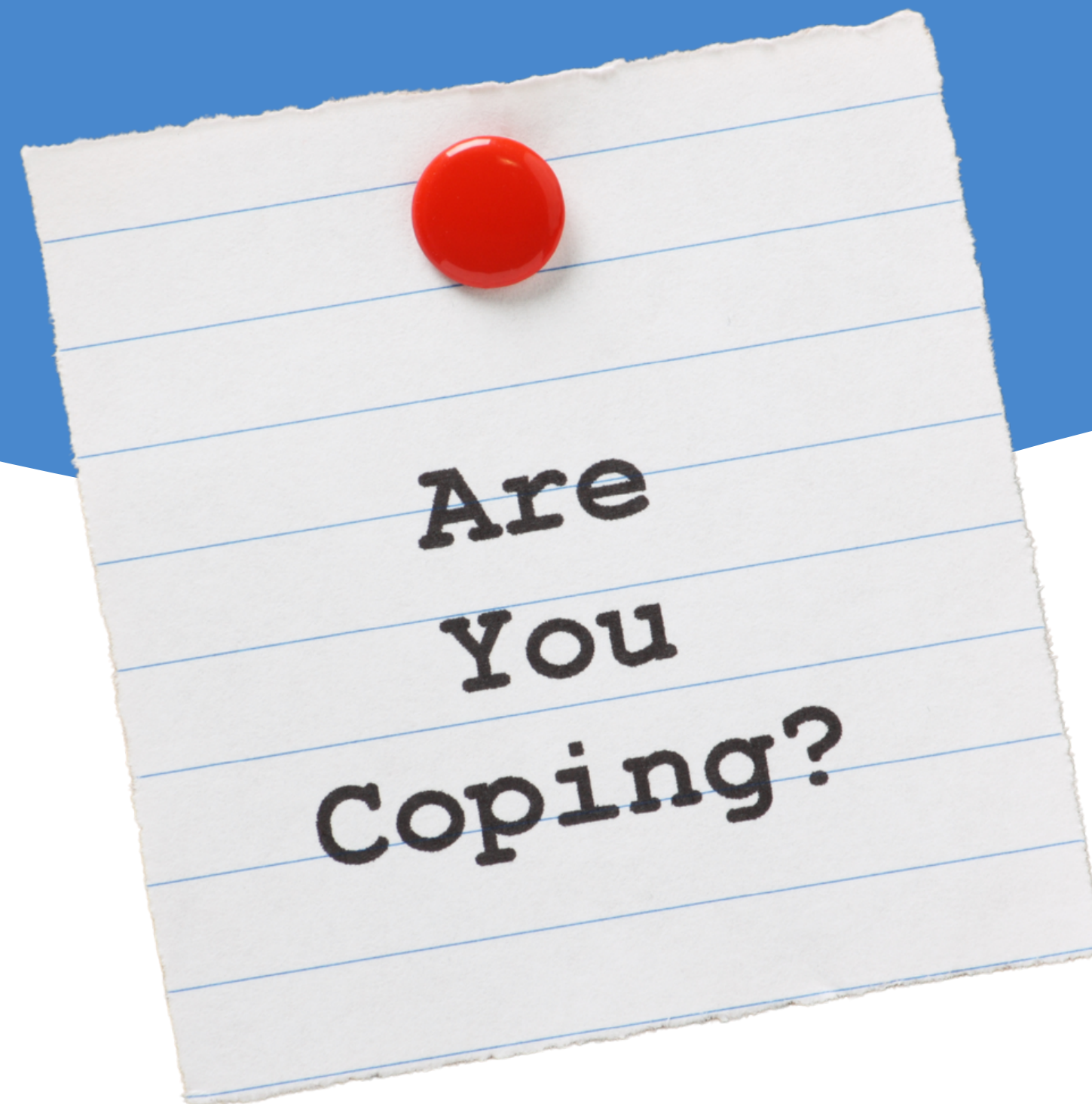


**Use one thin straw
and one wide straw**

Step 3



Diagnostic Teaching





Questions?

Resources

- <https://www.sutterhealth.org/services/asthma/treatments-procedures>
- <https://www.mayoclinic.org/diseases-conditions/asthma/in-depth/asthma/art-20045198>
- <https://www.webmd.com/asthma/what-is-asthma#:~:text=Asthma%20is%20a%20long%2Dterm,it%20a%20chronic%20respiratory%20disease.>
- <https://www.aafa.org/asthma-facts/>
- <https://www.mayoclinic.org/diseases-conditions/childhood-asthma/symptoms-causes/syc-20351507>
- <https://hospital.uillinois.edu/primary-and-specialty-care/pulmonary/our-areas-of-expertise/asthma/physical-effects>

Resources

continued...

- <https://pubmed.ncbi.nlm.nih.gov/28325118/>
- <https://hospital.uillinois.edu/primary-and-specialty-care/pulmonary/our-areas-of-expertise/asthma/emotional-effects-of-asthma>
- <https://blog.healthalliance.org/wellness-101/disease-management/emotional-and-social-effects-of-asthma/>
- <https://www.tandfonline.com/doi/abs/10.1080/2050571X.2017.1322740>
- <https://asthmaallergieschildren.com/asthma-allergies-articulation-a-speech-therapy-perspective/>
- <https://www.lung.org/lung-health-diseases/lung-disease-lookup/asthma/diagnosing-treating-asthma/how-is-asthma-diagnosed>